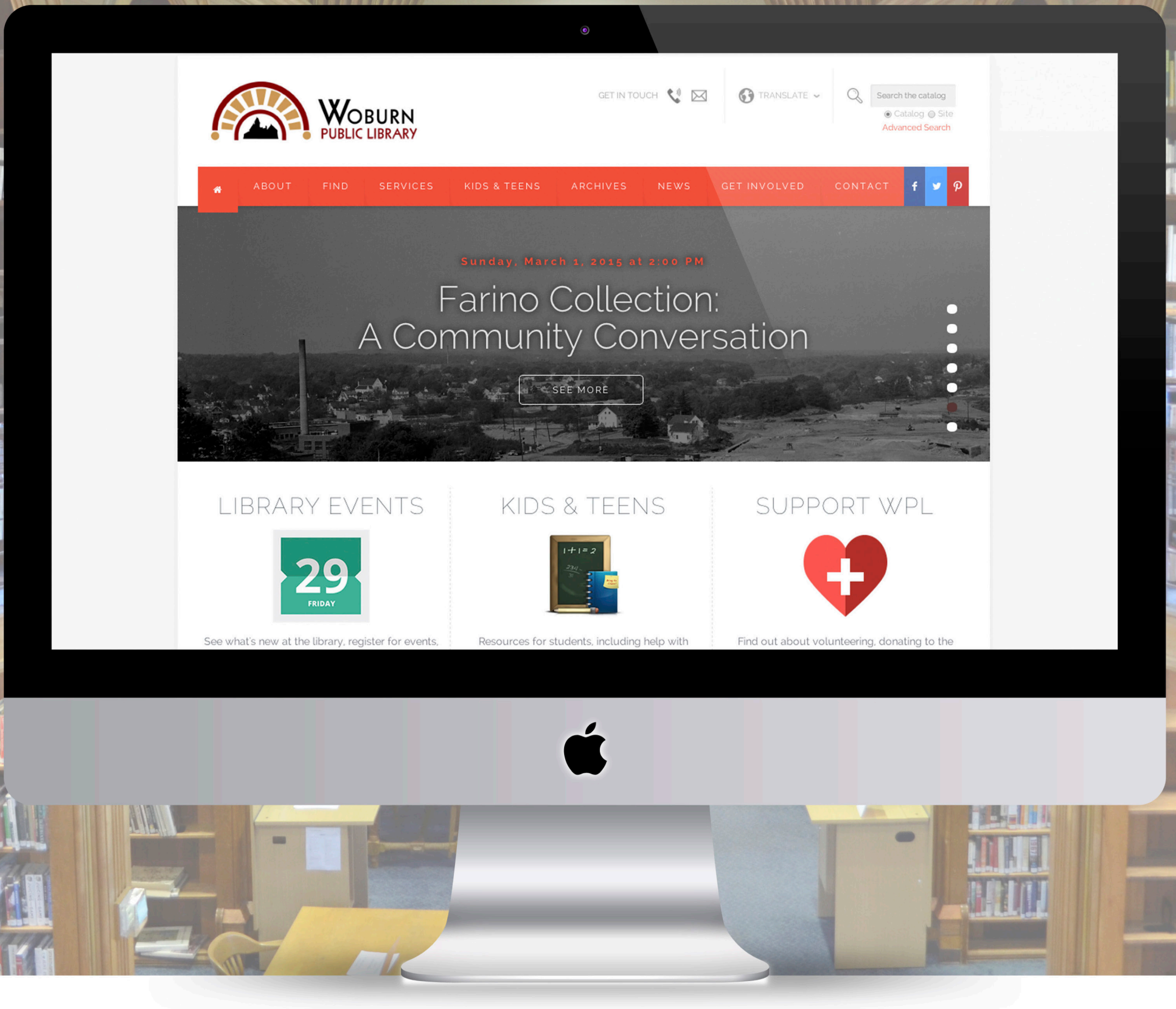




WOBURN
PUBLIC LIBRARY

www.woburnpubliclibrary.org

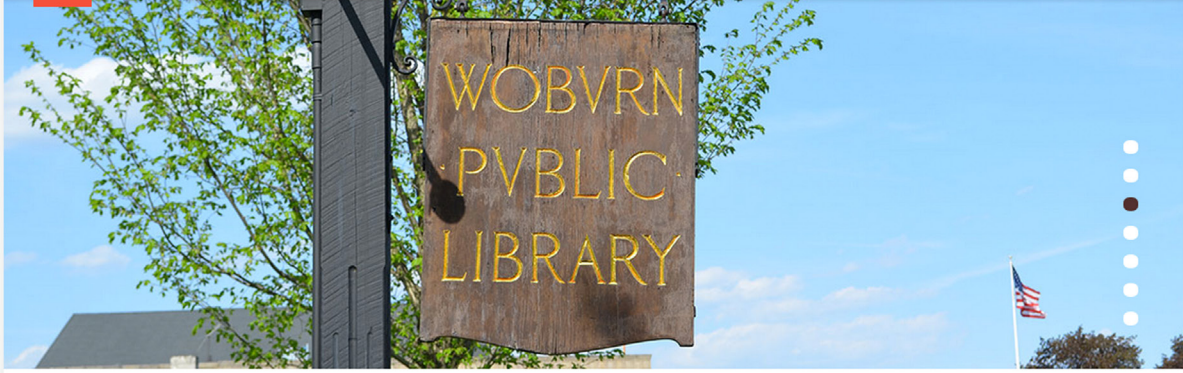


Project Overview

Andrea Bunker, *Director*

"We feel like Stirling not only knew what we wanted, but they also were able to show us what we needed. Communication with them has been, and continues to be easy, and they have been responsive to any problems or questions we have posed. Overall, it was a smooth project with exceptional results. We could not be happier with their work and their professionalism."

Prior to Stirling Technologies redesign and development, Woburn Public Library's website was outdated, non engaging, and lacked an ease of navigation. Woburn's award winning library website design features clear, easy-to understand navigation elements with drop-downs and mega-menus, as well as a top section with quick contact information, and a hybrid catalog/site search that integrates directly with the Minuteman Library Catalog. Woburn Public Library's mission was to create a user-friendly experience that increased library patronage and Stirling Technologies helped them achieve this.



LIBRARY EVENTS



See what's new at the library, register for events, and get involved.

[SEE EVENTS](#)

KIDS & TEENS



Resources for students, including help with homework and recommended reading.

[READ MORE](#)

SUPPORT WPL



Find out about volunteering, donating to the library, and becoming a Friend.

[GET INVOLVED](#)

LIBRARY HOURS

Hours:

Mon-Thurs	9:00AM - 9:00PM
Friday & Saturday	9:00AM - 5:30PM
Sunday	Closed

Children's Room

Mon-Tues	9:00AM - 8:30PM
Wed-Sat	9:00AM - 5:30PM
Sunday	Closed

LATEST NEWS

January 13, 2015

Tax Form Update from IRS

We received the following email from the IRS regarding their tax forms: TFOP Filing Season Update While we had committed to waiting until next year to L.I

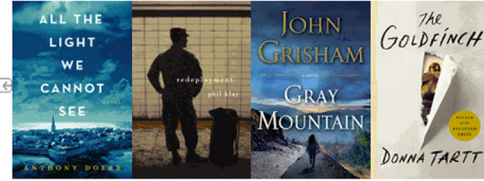
[Go to Blog](#)

FEATURED BOOKS

Non Fiction

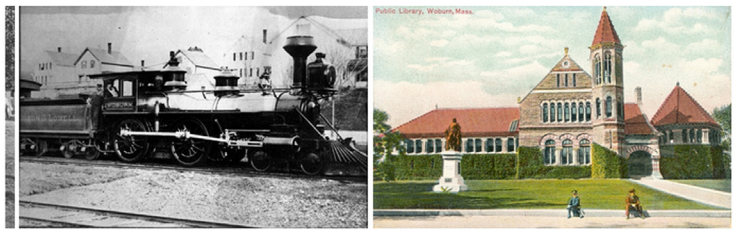
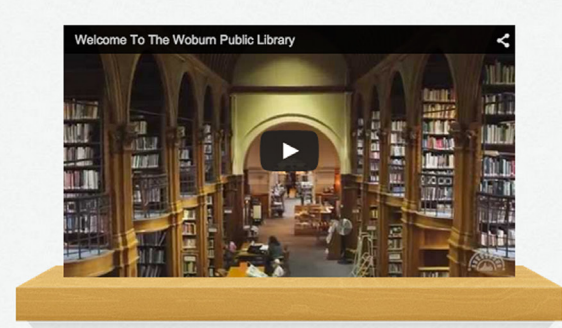


Fiction




Welcome To The Woburn Public Library

The Woburn Public Library's story is one deeply rooted in history. Designed by architect H. H. Richardson, Woburn Public Library is a national landmark and was built in 1879. With a wide array of archives, physical and digital collections there is truly something for everyone. Please stop by for a visit!



DISCOVER OUR ARCHIVES

The WPL's Glennon Archives detail the rich and vibrant history of Woburn through documents, photographs and museum objects. Digital Collections gives you online access.

[DIGITAL COLLECTIONS](#)

Have a question for a librarian? Ask it here and we will get back to you!

Enter your name

Enter your email

[ASK A LIBRARIAN!](#)

- [Library History](#)
- [Digital Collections](#)
- [About the Archives](#)
- [Volunteer](#)

- [How to Get a Library Card](#)
- [Museum Passes](#)
- [Digital Collections](#)
- [Homebound Services](#)
- [Ask a Librarian](#)
- [Jobs & Careers](#)
- [Help! I Have an Assignment!](#)
- [eBooks and eMedia](#)
- [Subject Guides](#)

TAX FORM UPDATE FROM IRS
January 13, 2015 | Comments off

HEATING PROBLEMS CLOSE LIBRARY
December 22, 2014 | Comments off

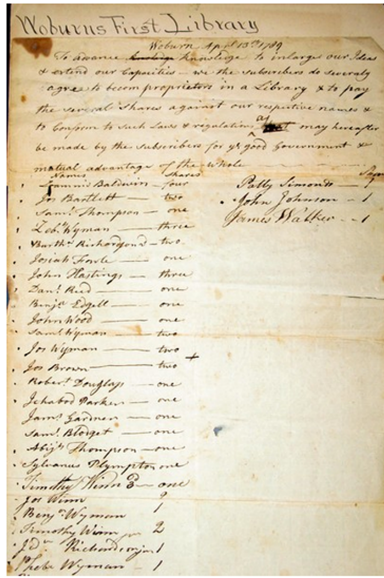
HOLIDAY HOURS
December 18, 2014 | Comments off

Library History

Home / About / Library History

Beginnings

1789



Woburn's library history began 200 years ago in 1789. On April 13 of that year, just 17 days before George Washington was inaugurated as the country's first President, thirty-three gentlemen and ladies signed a document in which they agreed to purchase shares in what would be known as the Social Library. Subsequent libraries in Woburn were also of the subscription variety; the concept of a free public library did not receive much support until 1854. At that time, Jonathan Bowers Winn offered his salary of \$300.00, which he had received as a delegate to the Convention to revise the State Constitution, to found a public library if the Town would give a matching sum. The offer was accepted and in 1856 the first public library opened in a room in the Municipal Building. L.L. Whitney was the first librarian, a post he held until 1860.

The Woburn Public Library grew slowly over the next few years, usually receiving not much more than the \$300.00 first appropriated. In 1865, two events of note occurred: the library was moved into rooms in the old Wade Block and Bowen Buckman, a well-known figure in the community, left the Library its first trust fund, the sum of \$500.00. In 1873, Timothy Winn, brother of J.B. Winn, died and also left the library a bequest, this amounting to \$3,000.00. Scarcely two weeks later, J.B. Winn also died and bequeathed to the library \$2,500.00 while leaving the bulk of his considerable estate to his only surviving child, Charles Bowers Winn.

Charles Bowers Winn (1838-1875), never in very good health, died within two years of his father. Included in his will was the following bequest to the Town of Woburn: "I give and bequest to the town of Woburn, in trust, the sum of one hundred and forty thousands dollars, to be used and disposed of for the purpose and in the interest of a Public Library..." And later: "As I am very desirous that this Library building shall be an architectural ornament to the town, I hope that no expense will be spared in the most important of all matters, namely: the selection of a plan; and I would suggest that several architects of the highest reputation be requested to make drawings, so that by comparing one with another, a satisfactory result in the matter of a choice of a plan will be more likely to be attained. This course, if pursued, may possibly be quite expensive, but in this case that ought not to be an obstacle or objection, for I think the within bequest for the Library and the other purposes in connection therewith, will be found to be of sufficiently liberal amount to allow of having everything of the very best, and consequently of the most expensive order."

1875

Winn Bequest

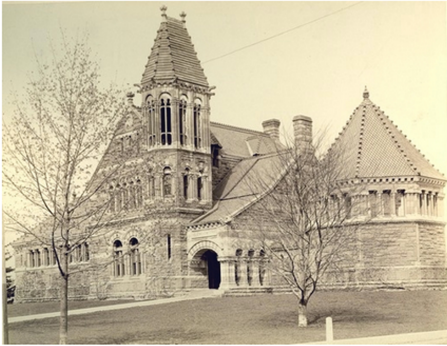


The February following the death of C.B. Winn the Town gratefully accepted his generous bequest. A committee consisting of the executors of the will, John Johnson, Parker L. Converse, and Edward D. Hayden, was formed to expend the money and execute the trust. After a site was selected, the Winn homestead on Pleasant Street, the best known architects of New York and Boston were invited to submit plans for a library building which according to C.B. Winn's wishes would also include a reading room, art gallery and museum.

According to the diary of George Mather Champney (who would become the first Librarian of the new building and whose son Edwin worked on Richardson's Trinity Church) on December 22, 1876: "This evening Mr. Hayden invited the Library Committee to examine the new plans for the Library Building at this house. All were there except Mr. Pollard. The plans were all gone over. None of the Committee had any very marked or decided opinions of their own; but after the examination and the remarks made upon each, it was quite unanimously agreed that the Gambrell & Richardson offering was the most complete and satisfactory. I do not believe this result would have been arrived at if the Comm. had looked at the plans individually, for no words of approval were given it when first gone over; but the leanings of Mr. Hayden and myself gave it character and it was then gradually fallen in with as the best and at last fully endorsed." And again on Tuesday, January 16, 1877: "The Library Building Committee has accepted the plan of Gambrell & Richardson which from the first has been the favorite one, and they have been notified to that effect. It may need some slight modifications, but as a whole the design is an admirable one both in architectural form and in interior arrangement."

Henry H. Richardson

1877



Henry Hobson Richardson (1838-1886), whose plans were finally accepted by the Library Committee, was born in Louisiana at Priestly Plantation. He graduated from Harvard in 1859 and then was only the second American admitted to study architecture at the Ecole des Beaux-Arts in Paris in 1860. He returned to the United States in 1865 and partnered with Charles Gambrell in New York (by 1874 Richardson had left New York and Gambrell and moved to Boston). After a number of other projects, Richardson's reputation was finally made when he won the competition for Boston's Trinity Church. The church was dedicated in February 1877, just about the time Woburn's Library Committee had decided upon Richardson's plan for their building. Norcross Brothers, the Worcester contractors who had collaborated with Richardson before, and especially on Trinity Church, were also selected to work on the Woburn Public Library.



WOBURN PUBLIC LIBRARY

Woburn Public Library
 45 Pleasant St
 Woburn, MA 01801
 (781) 933-0148

HISTORY & ARCHIVES

The Woburn Public Library's story is one deeply rooted in history. Designed by architect H. H. Richardson, Woburn Public Library is a national landmark and was built in 1879.

- Library History
- Digital Collections
- About the Archives
- Volunteer

QUICK LINKS

- How to Get a Library Card
- Museum Passes
- Digital Collections
- Homebound Services
- Ask a Librarian
- Jobs & Careers
- Help! I Have an Assignment!
- eBooks and eMedia
- Subject Guides

LATEST NEWS

TAX FORM UPDATE FROM IRS
 January 13, 2015 | Comments off

HEATING PROBLEMS CLOSE LIBRARY
 December 22, 2014 | Comments off

HOLIDAY HOURS
 December 18, 2014 | Comments off



DIGITAL COLLECTIONS

Digital Collections

Home / Archives / Digital Collections



Welcome to Digital Collections, the online access to the Glennon Archives' museum, photograph and archives collections.

From its beginning, the library collected and displayed artwork, natural history specimens and historical objects throughout the library and in the historical museum on the top floor. The contents of the Museum Collection reflect the diverse collecting practices of the time. There are paintings acquired by the Library's founder, Charles B. Winn, war relics brought home by Woburn's Civil War soldiers, kitchen implements that were part of the library's Colonial Revival era Colonial Kitchen and many other fascinating objects from Woburn's past to discover.

Photographic collections showcase the rich history of Woburn from the early days of photography in the 1850's up through the mid-twentieth century. The collection includes photographs by important Woburn photographers such as Baldwin Coolidge, Howard E. Strout and Charles Taylor that document the historic buildings, sites and people of Woburn.

In the archives are records for the large manuscript holdings of the Glennon Archives. These include fourteen categories of collections as outlined in the Guide to the Collections, from early Woburn town documents to church records, family papers and postcards. Each collection has a description that serves as a gateway to further research into a collection.

There are several search functions such as keyword search, advanced search, click & search or random images that allow you to explore the collections. Records will be added to Digital Collections on an ongoing basis. Please contact us with any questions.

SEARCH DIGITAL COLLECTIONS

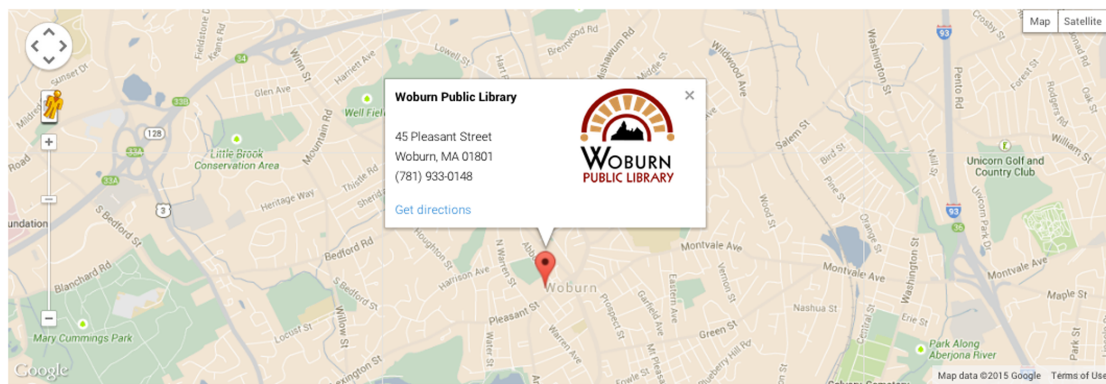
© 2014 Woburn Public Library. All Rights Reserved. | Developed by Stirling Technologies



CONTACT US

Contact Us

Home / Contact Us



Contact

Phone: (781) 933-0148
Children's Room: (781) 937-0405
Fax: (781) 938-7860

General Inquiries:
woburn@minilib.net

Address:
45 Pleasant Street
Woburn, MA 01801

Winter Hours (September – May):

Mon–Thurs	9:00AM – 9:00PM
Friday & Saturday	9:00AM – 5:30PM
Sunday	Closed

Children's Room

Mon–Thurs	9:00AM – 8:30PM
Wed – Sat	9:00AM – 5:30PM
Sunday	Closed

Visitor Information

Parking & Entrance

Two hour parking is available on the street and in the Abbott Street parking lot adjacent to the Library. Behind the Library near the Annex building, as well as the area near Library Field, has unrestricted parking. Directly behind the Library, to the far right as you enter the driveway, is van accessible handicapped parking.

Visible from Pleasant Street, the main entrance of the Woburn Public Library is located within a columned portico which features a stone bench and memorial plaque. A rear entrance, with a graded threshold, provides direct access to the Children's Room located on the lower level. An intercom is located at this door for anyone requiring assistance into the Children's Room.

Accessibility

Located near Woburn center, the Woburn Public Library is on two MBTA bus routes, the 134 and the 354.

Van accessible handicapped parking is directly behind the Library, to the far right as you enter the driveway.

To the far right rear of the building (near the handicapped parking) is a handicapped accessible entrance which is monitored by the staff through an intercom system. Upon arrival, simply use the intercom located by the door to alert staff. A staff member will meet you and direct you to the elevator. The elevator will bring you to the rear of the main floor of the building.

Directions

From I-95, take Exit 34 Winn St. toward Woburn. Follow for approx. 1.7 miles to its end at Woburn Center. Turn right onto Pleasant St. The Library is a brown stone building on the right just past the Mobil station.

[Get Google Maps Directions](#)

Personnel

Kathleen O'Doherty, Director
kodoherty@minilib.net

Andrea Bunker, Assistant Director
abunker@minilib.net

Patricia Daley, Circulation
pdaley@minilib.net

Gregg Bouley, Reference & Interlibrary Loan
gbouley@minilib.net

Cynthia Fordham, Children's Librarian
cfordham@minilib.net

Thomas Doyle, Archivist
tdoyle@minilib.net

Beverly Thompson, Technical Services
bthompson@minilib.net

Tracy Breeden, Homebound Service
tbreeden@minilib.net



Woburn Public Library
45 Pleasant St
Woburn, MA 01801
(781) 933-0148

HISTORY & ARCHIVES

The Woburn Public Library's story is one deeply rooted in history. Designed by architect H. H. Richardson, Woburn Public Library is a national landmark and was built in 1879.

- [Library History](#)
- [Digital Collections](#)
- [About the Archives](#)
- [Volunteer](#)

QUICK LINKS

- [How to Get a Library Card](#)
- [Museum Passes](#)
- [Digital Collections](#)
- [Homebound Services](#)
- [Ask a Librarian](#)
- [Jobs & Careers](#)
- [Help! I Have an Assignment!](#)
- [eBooks and eMedia](#)
- [Subject Guides](#)

LATEST NEWS

TAX FORM UPDATE FROM IRS
January 13, 2015 | Comments off

HEATING PROBLEMS CLOSE LIBRARY
December 22, 2014 | Comments off

HOLIDAY HOURS
December 18, 2014 | Comments off

© 2014 Woburn Public Library. All Rights Reserved. | Developed by Stirling Technologies



MUSEUM PASSES

Museum Passes

Home / Services / Museum Passes

BROWSE THIS SECTION

- Homebound Services
- Museum Passes
- Technology
- Tax Forms & Assistance
- Ask a Librarian
- How to Get a Library Card
- Reader's Advisory

Any **Woburn resident** with a valid Minuteman Library Network card may reserve any of our Museum Passes. All Museum Passes are courtesy of the Friends of the Woburn Public Library.

RESERVE A PASS

There is a limit of one pass per day per family. You may reserve more than one pass at a time for different museums on different days. You may also reserve more than one date at a time for the same museum, although the Library may place limits, especially during school vacations.

Museum Passes may be reserved **online**, in person at the main Circulation Desk, or by telephone (781-933-0148). You will need your Library card to place the reservation.

Reservations are suggested, especially for school vacation dates. We would appreciate a call if you need to cancel your reservation.

To pick up your pass, you will need to bring your valid Minuteman Library Network card or your license with a Woburn address to the main Circulation Desk at the Library.

Passes are stamped with the date of use and are good only for general admission on that date. Passes do not need to be returned to the Library EXCEPT for The Discovery Museums, Einstein's Workshop, the Griffin Museum of Photography, Mass. DCR, and the USS Constitution Museum passes.



Boston Museum of Science

Discovery Museums

Pass admits up to 3 people at \$5.75 per person to both museums. Regular ticket price is \$11.50 per person for both museums.



Children's Discovery Museum Hours:

Tues.-Sun. 9AM-4:30PM
Closed on Mondays except in summer and some Monday holidays

Science Discovery Museum Hours:

Tues.-Fri. 1PM-4:30PM
Sat. & Sunday 10AM-4:30PM
Closed on Mondays except in summer and some Monday holidays

177 Main St (Rte. 27)
Acton, MA 01720
Phone: 978-264-4200

New England Aquarium

Pass admits 4 people at \$10.00 per person
Monday - Friday 10:00 - 5:00; Weekends and Holidays 9:00 - 6:00
Central Wharf
Boston, MA 02110-3399
617-973-5200



Museum of Science

Pass admits 4 people at \$10.00 per person
Saturday - Thursday 9:00 - 5:00; Friday 9:00 - 9:00
1 Science Park
Boston, MA 02114
617-589-0100



Museum of Science.

Children's Museum

Pass admits 4 people at \$7.00 per person; children 0-12 months are free
Monday - Sunday 10:00 - 5:00; Friday 10:00 - 9:00
Children's Wharf
300 Congress Street
Boston, MA 02210
617-426-8855



Museum of Fine Arts

Pass admits 2 people at \$10.00 per person
Mon., Tues., Sat., Sun. 10:00 - 4:45; Wed-Fri 10:00 - 9:45
Avenue of the Arts
465 Huntington Avenue
Boston, MA 02115-5523
617-267-9300



Peabody Essex Museum

Beginning Feb. 1st, Pass admits:
On Saturdays, Sundays, and Monday holidays, 2 people at \$10.00 per person
On Tuesdays through Fridays, 2 people at \$5.00 per person



Tuesday - Sunday, and holiday Mondays 10:00 - 5:00; 3rd Thurs. of every month 10:00-9:00
161 Essex Street
Salem, MA 01970-3783
978-745-9500 or 866-745-1876

Special Note: Work continues on the museum's expansion project, part of a \$650 million Advancement Campaign that includes new galleries, education spaces, a restaurant and more. Stay up to date with [gallery changes](#).

USS Constitution Museum

Pass admits up to 9 people for free. Limit one pass per group.
November 01 - March 31: Open Daily, 10:00 - 5:00
Closed Thanksgiving Day, Christmas Day and New Year's Day
April 01 - October 31: Open Daily, 9:00 - 6:00
Building 22, Charlestown Navy Yard
Boston, MA 02129
(617) 426-1812



USS Constitution Museum passes are courtesy of the museum

Special Note: The USS Constitution Museum and the USS Constitution (the Ship) are not operated by the same organization. See the [Ship's website](#) for the most up-to-date information about hours.



Woburn Public Library
45 Pleasant St
Woburn, MA 01801
(781) 933-0148

HISTORY & ARCHIVES

The Woburn Public Library's story is one deeply rooted in history. Designed by architect H. H. Richardson, Woburn Public Library is a national landmark and was built in 1879.

- Library History
- Digital Collections
- About the Archives
- Volunteer

QUICK LINKS

- How to Get a Library Card
- Museum Passes
- Digital Collections
- Homebound Services
- Ask a Librarian
- Jobs & Careers
- Help! I Have an Assignment!
- eBooks and eMedia
- Subject Guides

LATEST NEWS

TAX FORM UPDATE FROM IRS
January 13, 2015 | Comments off

HEATING PROBLEMS CLOSE LIBRARY
December 22, 2014 | Comments off

HOLIDAY HOURS
December 18, 2014 | Comments off

Teachers Page

Home / Kids & Teens / Kids / Teachers Page

BROWSE THIS SECTION

- ▶ Homework Help
- ▶ Kid's Programs
- ▶ Parents Page
- ▶ Recommended Reads
- ▶ Teachers Page

We love teachers!

The Children's Room is chock full of materials that support of Common Core Standards, projects, classroom sustained silent reading, reading aloud, reading along, and listening. The Children's Room staff are able to help locate materials in-house and elsewhere in the Minuteman system. All it takes to get help is a quick phone call, email, or submission of the relevant forms below.

Teachers who borrow for their classrooms will soon be able to use a school library card, which will be kept at the library. Each Woburn public school will have an assigned card. Teachers will be able to borrow books for up to 9 weeks, including deposit collections on particular topics that can be kept in the classroom for students to use at school to complete research projects. The principal will receive an email reminder when the materials are due, so that they can be collected and returned. Although the maximum length of borrowing time will be 9 weeks, books that are returned late will not accrue fines.

Sending us a heads-up on an upcoming project allows us to reserve the subject materials (if necessary) for students in a particular class. We are also able to search topics and help locate materials that may be owned by other libraries. Please feel free to send along the form, or call and ask questions so we can fine-tune the selection process to your specific needs.

Assignment & Project Form

Email *

Enter Email

Confirm Email

Assignment *

Teacher's Name *

First

Last

School *

Grade *

Number of Students *

Date Assignment Given *

Date Assignment Due *

Assignment Description *

0 of 1000 max characters

Is this assignment limited to certain materials? (i.e. books, magazines, newspapers, etc.)

0 of 500 max characters

Additional comments

0 of 1000 max characters

SUBMIT

Scheduling a Field Trip to the Library

Please contact the Children's Room at (781)937-0405, or email Children's Librarian Cynthia Fordham at cfordham@minilib.net at least 2 weeks ahead of your proposed visit. Our librarians offer guided tours to any local class or school group who wishes to visit the Woburn Public Library. Come see what we have to offer! We can tailor our tours to address specific interests and age ranges, and we're happy to provide title recommendations as long as you let us know what you're looking for ahead of time. We also offer help to any local student classes or groups who would like to visit the library and use our resources for special projects or assignments.

Name *

First

Last

Phone *

Email *

Which school or group are you representing? *

What ages or grades will your group include? *

Why would you like to visit the library? *

We'd like a tour of the Children's area
 We'd like a tour of the Teen area.
 We'd like a tour of the whole library, including the Museum.
 We will need the help of Reference librarians.
 We will need the help of Children's librarians.
 We will need the help of the Teen librarian.
 We have a special project and would like help with research.
 Other

SUBMIT

HISTORY & ARCHIVES

The Woburn Public Library's story is one deeply rooted in history. Designed by architect H.H. Richardson, Woburn Public Library is a national landmark and was built in 1879.

- ▶ Library History
- ▶ Digital Collections
- ▶ About the Archives
- ▶ Volunteer

QUICK LINKS

- ▶ How to Get a Library Card
- ▶ Museum Passes
- ▶ Digital Collections
- ▶ Homebound Services
- ▶ Ask a Librarian
- ▶ Jobs & Careers
- ▶ Help! I Have an Assignment!
- ▶ eBooks and eMedia
- ▶ Subject Guides

LATEST NEWS

TAX FORM UPDATE FROM IRS
January 13, 2015 | Comments off

HEATING PROBLEMS CLOSE LIBRARY
December 22, 2014 | Comments off

HOLIDAY HOURS
December 18, 2014 | Comments off



HELP! I HAVE AN ASSIGNMENT PAGE

Help! I Have an Assignment!

Home / Kids & Teens / Teens / Help! I Have an Assignment!

BROWSE THIS SECTION

- ▶ Recommended Reads
- ▶ Programs
- ▶ Jobs & Careers
- ▶ School & Assignment Resources
- ▶ Help! I Have an Assignment!
- ▶ Awesome Sauce

Your teacher has given you an assignment. **Before you proceed, you need to know the following:**

1. **When** it is due.
2. **How many** sources you need.
3. **What type(s)** of sources your teacher will accept.
4. What you are **being asked** to create, write, prove, etc.

Here is a breakdown of what we can offer based on how close you are to the answer for #1.

DUE IN LESS THAN 12 HOURS	Most likely, you are reading this at 2:17am...the morning your assignment is due. You found this page in desperation. Get help now.
DUE IN 1 TO 9 BUSINESS DAYS	Alright, we have the kids menu of options with this timeframe. View your options.
DUE IN 10 TO 15 BUSINESS DAYS	You may have to digest the information you receive quickly, especially if you are at the 10-day end of the spectrum, but while you wait for your materials, you can complete your database research and exhaust all your options from MLN. Start researching.
DUE IN 16+ BUSINESS DAYS	You are officially the Martha Stewart of assignment completion, and we love you for it. You have enough time to spin your ideas, put weak arguments out to dry and more! Begin exploring.

Less than 12 Hours

Most likely, you are reading this at 2:17am...the morning your assignment is due. You clicked this link in desperation. You are asking yourself why you didn't start this last week. You are wishing it was 2:17pm the previous day. Then you could go to the actual library. But you are here. On the Help! page, with a churning in your stomach and a recurring waking nightmare of a red lettered F. You are hoping we can work magic. It won't be David Blaine's level of magic. It will be more like this [level of magic](#). And now we got you to click on both links, leading you to the cute cat video in the sidebar, making it now 4:17am without you having done any research yet...why, interwebs, why?! Alright, we're in this together now. Let's pull this band-aid and make this a life experience never to be repeated.

Does your answer to #3 include eJournals, eBooks, and websites found on the very internet that just supplied you with 2 hours of feline distraction (btw, sorry about that)? Good, because it is our only deck of cards.

eJournals and eBooks

Welcome to the deep web, which is the part of the internet iceberg you cannot see without us. This is no Google. This is a prodigious (SAT word alert!) vault of peer-reviewed academic literature. All you need is your library card number.

Tips:

- Given your limited amount of time, go to the "advanced search" option. Click the box for "limit to full text articles" or some variation thereof. Proceed with your search, and get results you can read right away.
- When you click on an article you would like to use, look for the citation icon, which will create your citation for your Works Cited or Bibliography in APA, MLA, and Chicago Manual styles. Time saver? Check!

Databases: General Search

Try these databases if you are beginning the research process, have a topic that spans subjects, or do not see a subject search that fits your topic.

Academic OneFile 1980 – present

Peer-reviewed, full-text articles on physical sciences, technology, medicine, social sciences, the arts, theology, literature, and other subjects. Full-text coverage of the New York Times back to 1995. Updated daily.

Britannica Online School Edition

Four complete encyclopedias and other resources

Expanded Academic ASAP 1980 – present

Articles from journals, magazines, and newspapers on arts and the humanities, social sciences, and science and technology

Gale Virtual Reference Library

Encyclopedias and specialized reference sources for multidisciplinary research

You are officially the Martha Stewart of assignment completion, and we love you for it. You have enough time to spin your ideas, put weak arguments out to dry, iron out the details, and organize them inside that bureau you built and finished with "old savannah moss" paint from your own line at a home improvement store. Seriously, with this timeframe, the nationwide search is at your side. Go ahead, pick the most esoteric (SAT word alert!) topic in the world. Dare us to not find a resource!

OCLC is our worldwide catalog, but we can request only books owned by at least eight (8) libraries in the United States. You do need to [contact our Reference Librarian](#) to request any OCLC item. Also, you may have to pay for shipping & handling costs (see our Jobs & Careers section for making the money to pay those fees).



Woburn Public Library
45 Pleasant St
Woburn, MA 01801
(781) 933-0148

HISTORY & ARCHIVES

The Woburn Public Library's story is one deeply rooted in history. Designed by architect H. H. Richardson, Woburn Public Library is a national landmark and was built in 1879.

- ▶ Library History
- ▶ Digital Collections
- ▶ About the Archives
- ▶ Volunteer

QUICK LINKS

- ▶ [How to Get a Library Card](#)
- ▶ [Museum Passes](#)
- ▶ [Digital Collections](#)
- ▶ [Homebound Services](#)
- ▶ [Ask a Librarian](#)
- ▶ [Jobs & Careers](#)
- ▶ [Help! I Have an Assignment!](#)
- ▶ [eBooks and eMedia](#)
- ▶ [Subject Guides](#)

LATEST NEWS

[TAX FORM UPDATE FROM IRS](#)
January 13, 2015 | Comments off

[HEATING PROBLEMS CLOSE LIBRARY](#)
December 22, 2014 | Comments off

[HOLIDAY HOURS](#)
December 18, 2014 | Comments off





RESPONSIVE



Modern Website

Completely responsive on all devices

Resizes on laptop, tablet and mobile

Mobile-Friendly

Woburn Public Library is now re-designed for the modern patron. Visiting Woburn Public Library on a cellphone is now optimized for the modern mobile web surfer.

